

Michael Good M. Photog., Cr., CPP

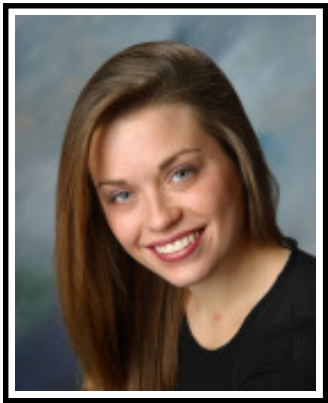
PHOTOGRAPHIC TRENDS

300 Mt. Lebanon Blvd.
Pittsburgh, PA 15234
412-563-2112

MICHAEL.PHOTOGRAPHICTRENDS.COM



**Head Shots
Fashion and Artists
&
Executive Portraits**



**From
this
to this**



Extra photography time: 1/4 hr = \$ 125

Retouching / image enhancement = \$ 20 each.

Layout of composit sheets: Information - \$ 45

Additional image on Composit - \$ 75 each.

Print Prices

<u>8 x 10's</u>	<u>5 x 7's</u>	<u>4 x 5(6)'s</u>
1 = \$65	1 = \$40	1 = \$25
2 to 3 = \$45	2 to 3 = \$31	2 to 3 = \$20
4 to 7 = \$40	4 to 7 = \$25	4 to 7 = \$16
8 to 15 = \$ 30	8 to 15 = \$ 20	8 to 15 = \$ 12

Photography Sessions:

60 minute session includes Hi-Rez images on CD.

All images - \$ 600

20 images - \$ 450

10 images - \$ 350

30 minute session includes Hi-Rez images on CD.

All images - \$ 475

10 images - \$ 375

5 images - \$ 300

EXECUTIVE PORTRAITS

- \$ 275.00 -

Photography Session with one image burned in Color and B&W onto a CD. May be used for reproduction.

Extra pose from session \$125 at time of session or \$150 if ordered after the session.

*EXTRA PORTRAITS AT
REGULAR PRICES*